



Living
Paintings

Trustees' Report & Financial Statements **2019-20**



Reference and Administrative Details of the Company, its Trustees and Advisers for the Period Ended 31 May 2020

Trustees

Cat Bailey, Chairman
Neil Walke, Treasurer
Corianda Brown
Sir David Brown
Jane Findlay
David Hall
Catriona Macritchie
Claire Short

Cat Bailey and Neil Walke are members of the Management Committee

Trustees appointed

Sir David Brown (August 2019)
Jane Findlay (August 2019)
Claire Short (January 2020)

Trustees resigned

Vicki Harris (March 2020)
Andrew Leach (August 2019)

Company details

Company registered number: 3095963
Charity registered number: 1049103

Registered office

Queen Isabelle House
Unit 8, Kingsclere Park
Kingsclere
Newbury, Berkshire, RG20 4SW

Company secretary

Camilla Oldland

Chief Executive

Camilla Oldland

Independent auditor

James Cowper Kreston
Chartered Accountants and
Statutory Auditor
2 Communications Road
Greenham Business Park
Newbury
RG19 5AB

Bankers

Bank of Scotland

The Edinburgh Royal Mile Branch,
300 Lawn Market,
Edinburgh, EH1 2PH

Newbury Building Society

105b Northbrook Street,
Newbury, Berkshire, RG14 1AA

CAF Bank Limited

PO Box 289,
West Malling, Kent, ME19 4TA

Solicitors

Pitmans


47 Castle Street,
Reading, Berkshire, RG1 7SR



Contents

Administrative and Professional Information	1
Report of the trustees for the year 1st June 2019 - 31st May 2020	
Introduction	5
Our Year	6
Highlights	8
COVID-19 Impact & Response	15
The Financial Picture for the year 1st June 2019 – 31st May 2020	18
Case Studies	19
Objectives and Activities	22
Our Volunteers	23
Impact of our work	24
The Future (Our Work Plan)	26
Structure, Governance and Management	27
Financial Review	30
Our Reserves Policy	31
Trustees' Responsibilities Statement	33
Report of the Independent Auditors	34
Statement of Financial Activities	37
Balance Sheet	38
Cash Flow Statement	39
Notes to the Financial Statements	40





Every six minutes in
the UK, approximately
one more person
loses their sight.

**Every day, 250 more people join the two million
people already living with sight loss.**

Four of them will be children.

And this number is set to double by 2050.

**80% of the information we receive
reaches us via our eyes.**

imagination

share engage

belonging

fun **empathy**

equal footing

inclusion **play**

read **learn** thrive

understanding

confidence



Introduction

Every day 250 people start to lose their sight. This number includes four children whose parents will hear that their precious child is, or will become, blind. It is a devastating diagnosis, leaving parents uncertain as to how their child can join in with story time at nursery, follow school work with their sighted peers, and make friends. For as well as the educational impact, blind children face real social exclusion, as they struggle to join in conversations about the visually informed subjects that form the basis for so much social interaction. For older people, who often live alone, we know only too well that blindness can lead to life shattering isolation, leaving them cut off from the world around them and activities that brought them joy.

"I always advocate the work of Living Paintings because of what it has given to me and allowed me to 'see' what I would otherwise have overlooked. Blindness can be very lonely and isolating, but listening to the Living Paintings Touch to See books always feels like having an old friend come to visit.

The tactile pictures are welcome 'eyes' into many different aspects of the visual world. I have learnt so much through Living Paintings and I want to say a heartfelt thank you for being there always. They have been a reliable friend throughout many difficult times."

Our work at Living Paintings is designed to address the significant challenges that living with sight loss brings whatever the age. Our free postal library of Touch to See books, with their raised images and audio guides, website and Book Clubs create the unique opportunity to explore the visual world which in turn brings pleasure, learning and new friendships to blind and partially sighted children, young people and adults.



Evidence proves that the work of Living Paintings transforms the lives of those blind and partially sighted people of all ages that we reach.



Our mission is to reach ever more people with our life changing services.

Our Year

This has proved to be a year of two unequal halves for Living Paintings as the world came to grips with the onset of the Covid-19 pandemic. Within this context our most important achievement has been that our services have remained fully operational throughout. As we all embarked on a different way of living, Living Paintings adapted with remarkable flexibility, agility and speed to ensure that we could continue to offer a service for which the need was growing exponentially. So we begin this report with just three stories that provide an insight into why this achievement has been of such great importance.

Eight year old Tayen is blind and undergoes constant chemotherapy

for the condition neurofibromatosis which causes tumours on her brain and has resulted in her sight loss. On medical advice she, her brothers and parents have had to fully shield during the pandemic, turning all their worlds upside down. This is what her mum had to say about receiving the first delivery of Touch to See books during the pandemic when their isolation began. "Tayen was over the moon to receive two boxes of new books from Living Paintings, she wasted no time getting all of the books out!"

"I can't explain just how **happy** those boxes made her."



Tayen doesn't cope well with any changes to her routine so was very upset by all the disruption but she knows what these boxes of books are, they don't change and I know she felt comforted and reassured by them".



Danni is 73 and lives alone.

Being medically vulnerable Danni began shielding in early March 2020. She is very able within her own home and receives no social care visits.

This is what Danni has to say about receiving our Touch to See books during Covid-19. **"I think isolation is as big a problem for blind and partially sighted people as the virus itself."**



"The people who read the audio descriptions are like my real friends as they guide me through the magical places we explore together and for those times **I no longer feel alone.**"

I feel very lucky to have Living Paintings books sent to me; they provide me with great comfort. I don't watch TV and I can't see what is going on through my windows - the only break in my long days is when I sit down with your boxes of magic containing pictures that transport me.

As I sit on my sofa I am taken out of myself into all sorts of different worlds; I travel the world. I visit art galleries, I visit gardens, I go bird watching, I can even do science experiments if I wish.

Monty is 4 years old

He suffered the rare birth defect, infantile glaucoma and has very little vision as a result. He is a typically happy and busy chap living with elder siblings. During Lockdown 1.0 Monty was unable to attend his primary school for months. His mum had this to say: "The special Touch to See books sent to us by Living Painting for Monty to enjoy, have been a huge part of his life since he was very young and he adores them. **Never have the books been more important, than they have been during the Covid-19.** He is unable to access and benefit from the wealth of online resources that are available for fully sighted children and as such the books kept him going, kept him engaged and allowed him to enjoy wonderful stories in the same way as his sighted siblings and peers. He loved exploring the feely pictures and most of all he loved reading with his big brother because it was one of the few things that they could do together. **Living Paintings are a lifeline for us and so many other families of children with a visual impairment.**"



Highlights

MORE beneficiaries

During the year 520 new blind and partially sighted people of all ages were reached by our Touch to See books and had the opportunity to gain from our free, postal library service. 80% were children and young people. The heavy bias towards youngsters has been strongly impacted by the strategic consolidation of our Book Clubs programme which meant we were not creating new Clubs. This is our main route to benefitting blind and partially sighted adults.

All that we do is directly for the benefit of non-sighted children and adults. However, we know that our work also indirectly positively impacts the sighted people around them be they siblings, parents, spouses or classmates and we estimate that during the year Living Paintings has touched to lives of 750 more people in this way.

“I have been delighted with discovering Living Paintings. It has made a big difference to my life as I can listen and follow the raised images on my own, or better still with somebody to help and have a discussion with.

It is always a joy when the box arrives and we can discover the new subjects that they reveal.”



When my student read Handa's Surprise and looked very closely at the illustration of the elephant she said "Oh, is that what an elephant looks like, I didn't know".

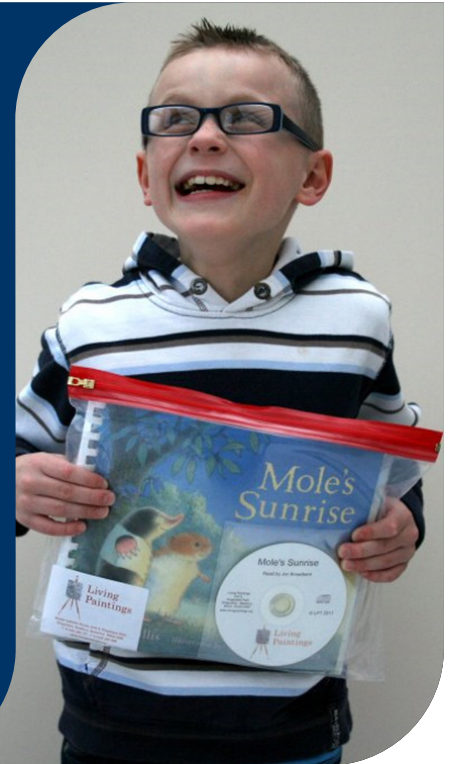


MORE benefit

During the year in total our library made 5,000 tailor made loans of Touch to See books each of which has benefited multiple blind and partially sighted children and adults. For instance, we know that on average 8 visually impaired adults benefit from each loan made to a Touch to See Book Club and at least 2 blind children will read the books that we send to a school. Also our special books are often read over and over again.

“He can confidently retell some of his favourite stories in his own words and using words learned from the text. This is increasing his vocabulary.

He likes to revisit the same books very often and can recognise the raised pictures and remember the associated words.”



In total our library completed 11,000 transactions; loans, renewals and returns. To make this possible our staff team worked extremely hard, and extra hours, because, from March, we no longer had the support of our invaluable library volunteers due to Covid-19.

“A huge thanks for providing such a wonderful ‘service’. You are always quick to respond to email requests and always send out books suited to age and visual needs.

We love receiving our box of books especially during the current Covid -19 situation. We have so much fun sharing books in our household.”



MORE impact

Throughout the year we continued to conduct our extensive monitoring and evaluation processes including our annual survey of all child beneficiaries. **The resulting Children's Impact Report (published November 2019) reported exceptional results. For the children who receive our Touch to See books:**

CONFIDENCE

98%

have improved confidence

ENGAGEMENT

98%

have attained an increased interest in learning

WELL-BEING

97%

have benefitted from an increase in shared experiences with sighted friends, family and peers

96%

were more confident in joining in class activities and discussions

95%

benefited from an improved confidence in reading

95%

have experienced a positive change in their confidence in socialising and making friends

97%

have benefitted from a positive change in their confidence in taking part in physical activities such as getting involved in playing games



Case Study: **Alba's Story**

I am Alba, I am 32 and I was born totally blind. Three years ago I had my first child, my gorgeous Eliot, and two years later our Amy was born. Both my kids and my husband are fully sighted. Motherhood is a challenge for everyone, I would say it is the biggest challenge any woman can face! And, although I always try to prove myself equal to others, I do believe it is an even bigger challenge for me.

When Eliot was born I was absolutely fine feeding, changing nappies, and taking him for walks. Even when he started crawling and walking things were easy as I just had to put some bells on his socks to know where he was. But as he was growing older and showing an eagerness to know everything around him I found myself more and more limited.

Before I knew of Living Paintings I used to Braille all of Eliot's books because I didn't want to be less fun or interesting than my husband was for Eliot. As soon as someone gave us a book, it went in a cupboard and it wouldn't leave that cupboard until it was Brailled. It took ages to Braille a book, not only because I had to type the text in see-through sticky paper and then cut it to shape and stick it in the book, but also because I wrote a description of the pictures in the book so that I could describe them and talk about them with Eliot. I always had to wait until my husband was free and we would sit and adapt each book. A short book for toddlers would take us an hour to do. And, as many will know, time is not something parents have to spare.



“I also loved how all books were the same size as the originals, and how Eliot could see the original pictures while I read the Braille.”

At the beginning I Brailled every book shortly after getting it, but then Amy was born, I had even less time and the cupboard of unbrailled books was getting fuller. My husband started reading them to Eliot, who was tired of my repeats, and I started noticing that Eliot would always want daddy to read instead of me, daddy had the fun new books.

Then I remembered someone had once mentioned Living Paintings to me and I gave it a Google. Why wouldn't I have done it sooner!

I signed up, which was really easy, and I couldn't believe it when I searched through the catalogue. They had everything, all those books other mums talked about but were too long for me to Braille! I ordered a couple of them, expecting to receive an e-mail saying they didn't have them, but the books arrived a few days later. It was so exciting to open the cardboard boxes, it felt like Christmas.



And then the pictures, all embossed and really easy to understand, so easy to feel and so realistic! I also loved how all the books were the same size as the originals, and how Eliot could see the original pictures while I read the Braille. I have video-called my mum in Spain to show her the books, and she has been really impressed. I have shown them to my mum-in-law, she learned Braille so she could Braille me some books too, but she is so happy now she can be relieved of that duty!

Now we order books constantly from Living Paintings, we get three or four at a time, we read them and re-read them, we return them and order new ones. It feels like going to a physical library, something I had always felt very jealous of because other mums could do it with their kids. **I now read to Eliot every evening, he sits on my lap and listens, and then he takes my hand and shows me the pictures and we talk about them together.** He is particularly fond of Julia Donaldson's books, but anything with planes or dinosaurs are always a thrill!

Our little Amy has started to take an interest in books too, and she loves to play with the embossed pictures. Sometimes she sits and listens to me read too. So I think we will be using Living Paintings for many years to come and I am really thankful that they exist.

I couldn't believe it when I searched through the catalogue. They had everything, all those books other mums talked about but were too long for me to Braille!

MORE exciting new Touch to See book titles published

We continued to add new titles to our library catalogue for free loan to our blind and partially sighted beneficiaries and here are some of our 'best bits'.



The Dinosaur That Pooped a Planet

written by McFly band members Tom Fletcher and Dougie Poynter was adapted into Touch to See with an audio description read by BBC science presenter Dallas Campbell.

The Smeds and the Smoos

from Julia Donaldson and Axel Scheffler was published in September 2019. Thanks to our excellent relationship with the publishers this title was adapted into Touch to See and released on the very same day as the book arrived on shop shelves to the delight of sighted and non-sighted children simultaneously. This is only the 5th time that a blind child has not had to wait for their accessible version.

The Snail and the Whale

Also by Julia Donaldson and Axel Scheffler was published to coincide with the BBC1 Christmas Day 2019 animation. Our accessible adaption enabled blind children to enjoy Axel's illustrations, characters and scenes from the story and brought the family tradition of watching the Christmas broadcast to life for them.



Literature Alive!

This series provides blind children with Touch to See books that act as a 'book shop window', inspiring and giving them the confidence to engage in some of the great works of children's literature, both classic and modern. We have written and published two titles for ages 9+:

Magical Worlds, Fantastic Stories

including images from Harry Potter, The Hobbit, The Northern Lights, Wee Free Men and Goth Girl. Martin Freeman and Imelda Staunton, both stars of movie versions of these titles, contributed to reading the audio descriptions.

The World of Walliams

including images from 10 of David Walliams' titles such as The Midnight Gang, Gangsta Granny, Grandpa's Great Escape and Boy in the Dress. David himself enjoyed reading for the audio soundtracks and was joined by Dan Snow and Hugh Bonneville.



MORE development

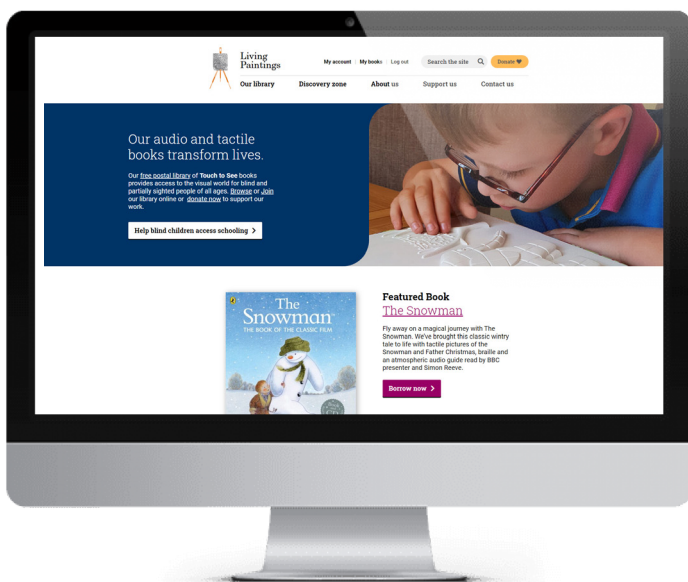
Our strategic investment in fundraising events programme pays off

As part of our strategic investment in developing new income streams we continued to deliver exciting events including Endure24 where we provided children's activities for supporters of this 24 hour running race, The Botanics Lounge gin night which saw the transformation of our local community hall into an exotic club, a choral concert and Summer Prize Draw, a Christmas Carol Concert and the running of the Marrakech Half Marathon by a team led by a blind representative of our charity and who raised £23,000. By March 2020 we had already raised £65,000 from this developing income stream and were forecasting a further £35,000 from events planned within the financial year. However the onset of Covid-19 forced their cancellation. An additional benefit from pursuing the fundraising events programme proved to be an excellent increase in awareness of the work of Living Paintings.



New Visually Impaired accessible website and online library service

Work commenced on building a new, online and visually impaired accessible Library Management System and website. Whilst undertaking this complex project we took advantage of the transition from our old data system to complete an extensive data cleanse and to create new and more comprehensive reporting which will provide the firm foundations from which to drive future growth of our beneficiary group. Having been slowed by the impact of Covid-19 we delivered the new system in September 2020 integrated with the launch of a new, visually impaired led, website.



COVID-19 Impact & Response

In March 2019 Living Paintings began its response to the evolving world crisis caused by Covid-19. We remained fully operational without interruption throughout the pandemic.

We continued to make loans of our Touch to See books which, being delivered via the post, meant that blind and partially sighted people young and old were able to safely benefit. During Lockdown we were the only charity in the visually impaired sector who continued with a full service. We supported a significant increase in the need for accessible literacy and educational resources as parents struggled with home schooling and teachers worked to counteract the impact of constantly interrupted and changing schools provision. Online educational resources are not accessible to blind children and families were desperate for shared activities that sighted and non-sighted can participate in equally as we all spent more time in our homes. Also, blind and partially sighted adults most of whom had to shield, found relief in their isolation and endless empty days through the adventurous exploration our Touch to See books provided in the safety of their homes.

Our already tightly resourced staff team performed extraordinarily well as we felt the impact of no longer being able to have support from the 45 volunteers who visit our buildings each week to work in Touch to See book production and Library Service delivery. For their own safety we had to close our doors to them.

“ I get to enjoy up to an hour's worth of light hearted, uplifting conversation with one of their staff members every week which I immensely enjoy and always look forward to.”

Relax and Chat

We launched this new service in emergency response to the higher levels of loneliness reported by our adult library members as a result of the Covid-19 restrictions. Delivered during Lockdown the service proved highly successful: **“Just recently I signed up to be part of the Living Paintings new ‘Relax & Chat’ telephone service, where they are going above and beyond to offer some companionship to their most vulnerable library members. I get to enjoy up to an hour's worth of light hearted, uplifting conversation with one of their staff members every week which I immensely enjoy and always look forward to. The Relax & Chat service they are offering is just another one of the wonderful ways in which they are providing some much needed pleasure and happiness during what is a very lonely time for me.”** Looking to the future we will take the learnings from its implementation and develop a new support network designed to extend the benefit of our service for blind and partially sighted adults.



Touch to See Book Clubs

This community led and delivered project has proved highly successful in helping to connect often isolated and lonely blind and partially sighted adults in regular meetings that nurture friendships and peer to peer support in a positive, inspiring and safe environment. Sadly, the pandemic has meant that this programme has been suspended except for within care homes where there has been growth in uptake as coordinators desperately seek life enhancing activities in order to help their residents to navigate this most difficult of times. Due to difficulties previously caused by the changes in the environment into which we have been delivering this important project we were already exploring different options to ensure its continuation. Once it is safe to return to meeting face to face we look forward to restarting our Touch to See Books Clubs via a new delivery model as the trustees remain convinced of the efficacy of the programme.

Financial Impact of Covid-19

In the last 3 months of our year Covid-19 presented significant challenges to our income projections as we faced the cancellation of two major fundraising events and a hiatus in grant making. However, an 11 year old blind boy called Ted came to our rescue. Ted is a library member and inspired by Captain Sir Tom Moore decided he wanted to help his favourite charity - us. He undertook a marathon across 26 days and signed up a group of enthusiastic helpers including England cricketer Jos Buttler. With encouragement from the likes of ESA astronaut Sir Tim Peake, Sir Derek Jacobi, Clare Balding and Geraint Thomas and some excellent local media coverage Ted raised a total of £43,000, £26,000 of which was received prior to 31st May 2020. He was our hero! Other heroes came in the form of a small group of particularly loyal grant makers who stood by us with emergency funding grants. Together, this resulted in our highest income year on record and means that we look forward to our new financial year with confidence despite the economic downturn that we expect and plan for.



We are extremely proud to be able to present such a positive report for this year despite the extraordinary challenges presented by Covid-19. As a tightly run, flexible and agile charity with amazing, loyal supporters and a genuine closeness to our beneficiaries, our determination was fuelled and we found the energy and resources to keep doing what we do best; support and transform the lives of blind and partially sighted people young and old.

Never before have we been faced with such an unpredictable year ahead. However our confidence in overcoming the yet unknown challenges is informed by the knowledge that we have:

- **An outstanding, engaged board of trustees**
- **A staff team who constantly adapt and impress with their immense commitment and hard work**
- **Friends, volunteers and supporters who are always by our side and prepared to go the extra mile**
- **Generous, loyal donors**
- **And blind and partially sighted children, young people and adults who need us to continue to help them to gain an understanding of the world around them and in doing so improve their life chances.**

We extend our extra special thanks to each and every one of them for giving us a year to be proud of and a future we can truly believe in despite the incredibly difficult circumstances created by the world we currently live in.



A handwritten signature in black ink, reading 'Catherine Bailey'.

Catherine Bailey - Chairman



A handwritten signature in black ink, reading 'Camilla Oldland'.

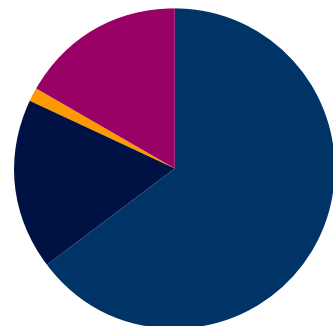
Camilla Oldland - Chief Executive

The Financial Picture for the year 1st June 2019 – 31st May 2020

Our income

- Events and Community
- Trusts and Foundations
- Covid Emergency Funding Trusts and Foundations
- Committed Givers

Total Income: £565,157



How we spent the money

- Services for Children and Young people
- Services for Adults
- Raising Funds
- Governance

Total Expenditure: £456,551



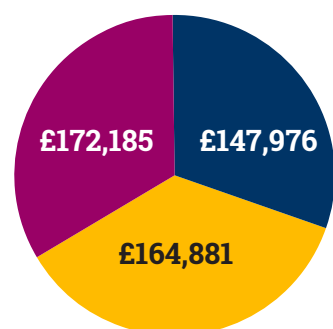
About our operating surplus

We achieved an extraordinary operating surplus of £108,606 for the year. This was thanks to Covid-19 Emergency Funding received from a small group of loyal grant making trusts with whom we have a long term relationship and local community foundations with some extra help from a little blind boy's fundraising efforts which raised £26,000 during May. These funds were received in the last 6 weeks of the year to 31st May 2020, and will be expended during 2020/2021 on underwriting our charity's essential services to blind and partially sighted people during a time that we expect to be financially very challenging as the impact of the pandemic continues to be felt. For instance we expect to lose approximately £80,000 due to the loss of fundraising events income.

Our Fund Balances at 31st May 2020

- Unrestricted Fund General "Cash" Reserve
- Unrestricted Fund Designated for Property for Charity's use
- Restricted Funds for special projects yet to be completed

Total Fund Balances: £485,042



Case Studies

Paul's Story

Paul has been a library member with Living Paintings for 14 years. During this time he has borrowed a wide range of our Touch to See books, he recently wrote to us to share his personal story...

"I was born partially sighted with a hereditary condition called Nystagmus. I also have ocular albinism and photophobia. I was always told that my sight would not deteriorate, but in 2009, it did and I became registered blind. Fortunately, by then, I had been to a rehabilitation centre where I learnt to touch type, read Braille and learn about Living Paintings.



As my condition is hereditary, my family have quite a good understanding of it, however, they can be over protective and smothering, in the nicest possible way, of course. My mother fought for me to be educated through main stream school back in the 1970s/80s rather than going to a special school. It was tough as there were no resources available like there are today, but I survived and it made me a stronger person.

When I first heard about Living Paintings, I was unsure if they were for me. I thought art was very posh and only for the upper classes and very visual. Why on earth would you show paintings to a blind guy? However, these myths have been dispelled by the wonderful work of Living Paintings. I have learnt so much about artists and movements in art, as well as discovering beautiful works of art through touch. I can honestly say that because of Living Paintings, I have discovered art that I never would have. I would just have ignored it thinking it was only for sighted people.

While I don't have any children to share Living Paintings resources with, I always advocate their work because of what it has given to me and allowed me to 'see' what I would otherwise have overlooked. Blindness can be very lonely and isolating, but listening to the Living Paintings Touch to See collections always feels like having an old friend come to visit. It is nice to hear the voices on the recordings, they are friendly, familiar and informative. The collections are prepared with great attention to detail and care which is evident and comes through in the recordings. The raised images are welcome 'eyes' into many different aspects of the world of art. I have learnt so much through Living Paintings and I want to say a heartfelt thank you for being there always. The staff in the office are friendly and very supportive. Living Paintings have been a reliable friend throughout many difficult times.

Keep up the good work."



Elena's Story

Elena was born with bilateral cataracts, she had surgery just after birth but it was discovered that her left eye was not formed properly with the cornea being very cloudy. She is therefore blind in this eye. Her right eye had a more successful surgery, with the cataract being removed, she has glasses to help her see and can see large things at around 3 meters at the moment.

Elena, who is 3, absolutely loves listening to stories and has great fun looking at the pictures and feeling the characters from the books Living Paintings kindly share with us.



The books you provide give us a great way to share stories with her, they keep her interested as they are nice and big and colourful. We are also keen for her to learn Braille to help her in the future. She loves the touchy feely parts of the books too.

We are so lucky to have found your resources as I don't know where else we'd be able to get the exposure to Braille like we have through Living Paintings, it's brilliant!

The people are also so very helpful. 😊

Elena gets so excited when we order new books from Living Paintings, she really benefits from them. We love snuggling up as a family and reading these books together.

I imagine the world is a scary place when you're visually impaired so having books to help explain things makes things less scary.

Many thanks, Emilie.

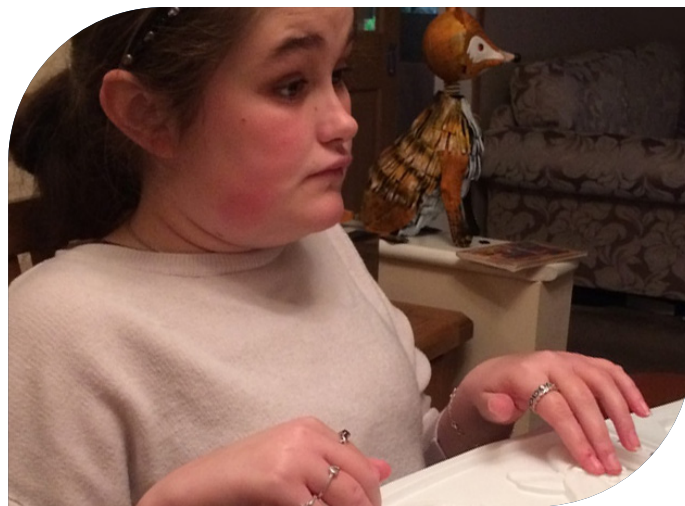
A mum's story

Grace was born blind in both eyes. I was told as a young mum that she would not walk until she was five - she walked at two, she would not be able to talk - she could speak in sentences at 16 months old, she would not have an imagination and that the road ahead would be difficult. At the age of two her biological father left our home as he struggled to cope with the responsibility that came with having a disabled daughter. Grace now has a brother who is nine and a stepfather and even though things can be challenging we work through them as a family unit.

Being told all the things that Grace would not be able to achieve made me very determined to give her the best opportunity I could to be all she could be. I rang the RNIB when she was very young to enquire about a Perkins Braille to be told that this would not be necessary until she started school, this did not sit well with me so I ordered one anyway and taught myself Grade 1 Braille and began to try to teach Grace. I wanted Grace to experience as much of the world as she could through



books, stories and writing as a visually impaired person's life can be very isolating so to be given the chance to journey to places in your mind and learn about different cultures and people is that much more important. Reading gives a visually impaired person a way to understand life that they would not get anywhere else and it also helps them with their sociability. Finding books was so very hard, the RNIB sold me two books called Choosy Charlie and The Giants Boot but these did not satisfy her desire to learn. I turned to Living Paintings and I am so very glad I did.



We would receive Touch to See books and read them together, Grace would be able to engage in the story. This allowed us to be like all the other parents and children who could share in the joy of reading and the unbreakable bond that comes along with this. Living Paintings books enabled us to laugh together and Grace would soak up more of the context of the book as she was using both her sense of touch and hearing which allows the brain to retain more than if she simply listened to it. Living Paintings books helped her brain to build the pathways necessary to have an understanding of information that was being presented to her and Grace is now studying a degree in History and I believe that this is in part down to the Living Paintings experience. Grace has also shared her love of reading with her little brother and he has been fascinated by the raised images. It has meant that he can read along with her and also shown him that disabled people can do all the things that able bodied people can and sometimes their way is much more interesting!!

Grace was asked by Living Paintings to edit scripts and this was a real boost for her self esteem as well as giving her the opportunity to give something back. This is very important for her as she wants to feel part of a community and this has helped her to do this.

Living Paintings have been there for us for a very long time and nothing is ever too much trouble. When lockdown occurred they were the only organisation that rang up to see how Grace was and offer her the opportunity to have a relaxed chat which has most definitely helped with her mental well being as visually impaired people have been very much forgotten during this time. They struggle to go out due to changes in the layout of places that are familiar to them and social distancing does not allow for those who need to be sight guided. Being at home has been a challenge for Grace but her weekly chats have boosted her mood as they have made her feel a valuable part of society and that someone cares about her.

I cannot speak highly enough Living Paintings, they have helped my family to bond, they have allowed Grace to experience all the corners of the world, to write poetry and stories that a sighted person could only dream of coming up with, to learn the intricacies of relationships with friends and family that are usually learnt from visual cues, to feel the elation of a happy ending, to laugh at the funny pictures from Mrs Armitage, Queen of the Road. **Without Living Paintings, Grace's world would be smaller - they have been the springboard to help her reach for the stars. Living Paintings is simply amazing and as a family we are forever in their debt.**

Objectives and Activities

The objects of the Living Paintings Trust, known as Living Paintings, set out in the Memorandum and Articles of Association are: **“To relieve and educate blind and partially sighted people”**.

In setting our objectives and planning our activities the Trustees have given careful consideration to the Charity Commission’s general guidance on public benefit.

What we do

Living Paintings purpose is to relieve the social and educational isolation that blind and partially sighted children, young people and adults suffer throughout their lives. Our method is to make the visual images that colour and inform our lives accessible to them.

We design, create and publish Touch to See books for all ages. These include raised tactile pictures accompanied by atmospheric, educational and entertaining audio guides. The audio guides, often narrated by famous people, help fingers explore the tactile images, tell the stories of the pictures and describe their features. In this way, the senses of touch and hearing combine to make up for the missing sense of sight. By including colour images of the topics in the tactile pictures, our books can be shared with sighted friends, family and classmates.

Our Touch to See books are provided completely free of charge from our postal library so all visually impaired people, no matter where they live or their financial circumstances, can borrow them and gain a feel for the visual world.

For Adults

With us, adults explore subjects such as British wildlife and the countryside, English gardens, architecture, the history of the teddy bear, history of art, and they can even take a tour of Edinburgh and other cities. They can enjoy all these topics and many more as a member of one of our community **Touch to See Book Clubs**, or at home with family and friends.

For Children

Our young library members can grow with the library, as pre-school children develop their fine motor skills by tracing the shapes of the well-loved characters Spot and Peppa Pig, as well as learning to listen and follow simple instructions. Children have fun and develop literacy with our Touch to See versions of best-selling titles such as Julia Donaldson’s The Gruffalo and Stick Man. Our educational range of books tie in to subjects across the National Curriculum and are excellent for homework help, too. We know that most of our young visually impaired members attend mainstream schools, so our resources offer the opportunity for positive, shared learning experiences. In addition our special interest range stimulates a visually impaired child’s own enjoyment and exploration of topics including Dinosaurs, World Music, Seashore and Space.

For Young People

Teenagers and young people can absorb themselves in our collection designed to support and stimulate teen interest areas such as; Fashion, Football, Film, Theatre and Music.



Volunteers

Volunteers are the key to the creation and delivery of our work and their contribution is what makes it possible to achieve so much with donations received. For the year to 31st May 2020 our wonderful team of volunteers continued to make an essential, committed contribution to Living Paintings. They numbered 460 meaning that our staff to volunteer ratio stands at 1:46. Unfortunately, due to the complexity of financially accounting for their invaluable contribution we do not reflect this in the balance sheet. However, this year we calculate their donations of time and expertise to be worth approx £150,000 which clearly shows that they are one of our most valuable assets. This is lower than in previous years because, in order to keep them safe, we did not have our volunteers coming into the offices from March 2020 due to covid-19. Our volunteers undertake a range of tasks, many of which require specialist skills and training. They help with every stage of the production process with researching, writing, recording, editing sound recordings, manufacturing Touch to See books, painting feely pictures etc. They also undertake the day to day library service transactions, help with fundraising, record keeping and the promotion of Living Paintings. Included in their number are many famous faces who give of their time freely, most often to record the audio descriptions for the Touch to See books. They include Sir Derek Jacobi, Joanna Lumley, Alan Davies, Michael Sheen, Lord Fellowes, Jo Whiley, Fearne Cotton, Dallas Campbell, ESA Astronaut Tim Peake and Sir Robert Winston amongst many more.

Such a team merits a high level of professional support as every Living Paintings activity includes a substantial volunteer component whether at Kingsclere, or working from home. So we go to great lengths to recruit, train and support our volunteers, communicate news to them, and give them the warm welcome they deserve and the gratitude they earn. During Covid-19 it has been our pleasure to place extra emphasis of supporting this wonderful group who do so much for us with weekly contact and virtual coffee mornings.

Why we do it

Evidence from the UK Vision Strategy confirms that sight loss is a major concern in the UK with significant health, social and economic impacts. The RNIB state that there are **two million people who are blind or partially sighted and this number is set to grow to 2.7 million by 2030.**

For children and young people

- 25,000 are under the age of 18;
- 65% of visually impaired children are in mainstream education;
- 80% of the information that we receive reaches us via our eyes, a fact particularly pertinent for blind and partially sighted children as they struggle to learn alongside their sighted peers;
- They are more likely to have had their condition from very early life (identified in the first year);
- 43% have experienced bullying because of their sight loss
- 86% have found themselves excluded from activities by their peers.
- The prevalence rate is so low that a mainstream setting is unlikely to have sufficient knowledge and experience to meet their requirements.
- 1 in 3 local authorities cut their spending on services for children and young people with vision impairment in the previous year.

For adults

- 85% are over the age of 65 and in the large part lost sight due to ageing;
- 60% live at the “extremes of poverty”;
- half live alone;
- 20% are housebound;
- Half feel moderately or completely cut-off from people around them,
- Older adults are 3 times more likely to experience depression compared to those with good vision,
- Guide Dogs estimate that 180,000 blind and partially sighted people never go out alone;
- Many older people struggle to retain a ‘will to live’ in the face of increasing sight loss.
- Two thirds of working age adults are not in education or employment.
- 250,000 who are over 75 report that they receive little or no help from their local social care services.

These people face challenges of mobility, social inclusion, achieving an education and securing a job. Many are struggling with the harsh realities of the emotional and practical devastation of losing sight at an age when new challenges are not easily met, whilst finding themselves increasingly cut off and with little or no support from severely limited and fast diminishing community services.

For blind and partially sighted children ‘They are more likely to live in a family experiencing financial hardship. They are likely to have less exposure to social and cultural events, have fewer friends and do less physical activity. Parents and teachers perceive them as performing less well at school than their sighted peers. Not surprisingly, there is evidence to suggest that they are less secure and confident from a psychological perspective. They are more likely to be bullied at school, have concentration or behavioural problems and feel unhappy, downhearted or low.’ *RLSB, RNIB and NatCen Social Research 2012*

Also, the findings of the Organisation for Economic Co-operation and Development state that, *“Reading was a more important indicator of future success than any socio-economic factors”* a statement that is key to the importance of our service, as we are enabling and encouraging visually impaired children to learn to read and inspiring an enjoyment of books in doing so.

All suffer isolation and exclusion.

What impact does our service have on the lives of blind and partially sighted people?

Our Touch to See library service helps blind and partially sighted people of all ages to:

- engage with new learning and interests;
- learn essential life skills;
- socialise to a far greater extent and beyond the scope of their home;
- take on new activities/challenges;
- start new/develop existing friendships;
- be stimulated, have fun and want to do more;
- integrate with their sighted peers on an equal basis;
- take a more active part in their local community and benefit to a greater extent from community services;
- grow their self confidence and self esteem.



All of the above has been learnt through extensive, direct feedback from members received over the years and the various case studies and surveys recently completed including:

Children's Impact Survey (completed November 2019) which reported:

For those blind and partially sighted children who receive Living Paintings' service:

- 98% have reported improved confidence
- 98% have attained an increased interest in learning; *90% significantly*
- 95% benefited from an improved confidence in reading; *83% significantly*
- 96% were more confident in joining in class activities and discussions; *83% significantly*
- 97% have benefitted from an increase in shared experiences with sighted friends, family and peers; *84% significantly*
- 95% have experienced a positive change in their confidence in socialising and making friends; *78% significantly*
- 95% have benefitted from a positive change in their confidence in taking part in physical activities such as getting involved in playing games; *73% significantly*



Touch to See Book Clubs Impact Survey completed 2018 reported that of the blind and partially sighted participants:

- 88% feel that their confidence has increased
- 100% have started new or developed existing friendships
- 94% say they have an improved quality of life
- 75% have ventured away from home to a greater extent
- 88% have taken up new activities/challenges
- 75% have discovered new services
- 81% have benefited in a practical way from peer-to-peer support

We also know that we are reaching those most in need with 50% of clubs being situated in areas that are in the lowest half of deprivation indices. 18% of participants are from black and ethnic minorities and 70% are over the age of 65, whilst 25% are 85 and over.



The Future

Our Aims

- To increase the number of blind and partially sighted children, young people and adults who benefit from our work.
- To increase the positive impact of our work for blind and partially sighted people.

Our Objectives

- Expansion and optimisation of our Touch to See content and service.
- Building of our community with co-creation, collaboration and partnership.

Our Work Plan

We know that in our beneficiary group we only have a minority of the blind and partially sighted children, young people and adults who could benefit from the proven value our service brings. Our continuing challenge is to reach them in order to support their early years development, education and life-long learning.

Therefore our work plan for the year 1st June 2020 to 31st May 2021 once again encompasses reaching new members, enhancing our services for existing members and developing our user experience and engagement. To this end we will be pursuing six key areas.

1. **Covid-19 Response** – Continuing with our Covid-19 response, safety measures and working arrangements whilst it remains necessary and moving into a period of consolidation across all our work once we leave this period of living in a world of pandemic.
2. **Publishing** - Developing the range, breadth, scope and diversity of our Touch to See Books.
3. **Digital Vision** - Delivering our digital strategy in support of our Objectives.
4. **Library Service** - Developing delivery in support of growing numbers of beneficiaries whilst optimising the opportunities offered by emerging technologies.
5. **Community** – Establishing a new delivery model for Touch to See Book Clubs and implementing it once Covid-19 conditions allow, and developing engagement with our beneficiary group alongside their families, teachers and carers.
6. **Organisation** – Undertaking a Strategic Review and setting a new 10 year strategy.

These six areas are intrinsically linked and will complement one another.

Structure, Governance and Management

Governing Document

The Living Paintings Trust was formed in 1988. The Trust was registered with the Charity Commission on 15 February 1989 as a charity. On 31 December 1995 the activities of the charity were transferred to The Living Paintings Trust, a company not having a share capital, limited by guarantee. The company is entitled to those exemptions from UK taxation which are available in law to charities. The Trust is governed by the Memorandum and Articles of Association.

Administration

The administrative and secretarial duties of the charity are undertaken in our office which is also the company's registered office. Details of the professional advisors are set out on page 1.

Trustees

The Trustees are also the Directors of the company. Under the requirements of the Memorandum and Articles of Association at the Annual General Meeting one third of the Trustees retire from office, being those who have been longest in office since their last appointment or re-appointment.

Trustee Recruitment:

The responsibility for appointing new members of the Board rests with the existing Trustees. The aim is to ensure that the membership of the Board includes people with varied skills and interests such as: business strategy, charity sector, education, finance, art history, human resources, law and visual impairment and any other expertise which is needed. The Trustees use their extensive networks to source possible new appointees and their details are brought to and discussed at a Trustees' Meeting. A potential Trustee is then invited to meet with the Chief Executive and talk with two existing Trustees prior to a formal proposal for appointment being made.

Induction and Training of Trustees:

The induction and training process is two fold. Arrangements are made to familiarise a new Trustee with their responsibilities using the Charity Commission's guide 'The Essential Trustee' and the Living Paintings Memorandum and Articles of Association. New Trustees are extensively briefed about Living Paintings' current position, finances, plans for the future and their expected role. They will meet with members of the staff team and some of the many volunteers.

The Trustees have overall responsibility for the work of the charity. They agree policies, strategies and the financial budgets. There is a Management Committee which includes a minimum of two Trustees, currently the Chairman and Treasurer, and appropriate staff members which has the responsibility for reviewing in detail the work of the charity. Progress on policy, strategy, the financial budgets and operational issues is reported through the Management Committee to the Trustees on a quarterly and annual basis. The day to day operation of the Trust's affairs is delegated to the Chief Executive.



Our Trustees

Cat Bailey (Chairman)

Creative Director and Founding Partner, PinkGreen.

Corianda Brown

Beneficiary of Living Paintings. Announcer, C4 Television. Previously BBC. A disability inclusion champion with lived experience of visual impairment.

Sir David Brown

Chartered Engineer and Fellow of the Royal Academy of Engineering. Chairman of the Manufacturing Technology Centre Ltd and Chairman of the Bletchley Park Trust Ltd. Previous directorships include Chairman of Motorola Ltd and Chairman of the British Standards Institution. Knighted in 2001 for services to British industry.

Jane Findlay

Head of Learning and Audience Development, Dulwich Picture Gallery. Previously at The British Museum, Kenwood House and the National Maritime Museum.

David Hall

Parent to visually impaired child. Director Strategic Accounts, Tanium. Previously Veritas Technologies and Symantec.

Vicki Harris (resigned Mar 2020)

Qualified Chartered Accountant. Previously Group Strategy and Marketing Director, Aldermore and held senior roles in Octopus Investments, GE Capital and McKinsey and Company.

Catriona Macritchie

Qualified Solicitor. General Counsel IP, HR and Data Privacy, Diageo PLC. Formerly various including McGrigor Donald (now part of Pinsent Masons) and William Grant & Sons Limited.

Claire Short (appointed Jan 2020)

Qualified Solicitor. Senior Government Lawyer currently with Department for Business, Energy and Industrial Strategy as Deputy Director, Nuclear and Non-Proliferation Legal team.

Neil Walke (Treasurer)

Qualified Chartered Accountant. Strategic Engagement Manager at Vodafone Group. Formerly with Deloitte.

Our Patrons

We are delighted to continue to benefit from the patronage of **Christopher Lloyd CVO, Dame Jacqueline Wilson, Sir Timothy and Lady Sainsbury**. Christopher was Surveyor of The Queen's Pictures 1988 – 2005 and is a former Curator at Christ Church Oxford and the Ashmolean Museum Oxford. Dame Jacqueline Wilson was the Children's Laureate 2005-07. She works full-time as a writer and is a best selling, popular children's author. She has sold over ten million books. Sir Timothy is a former MP and Minister of State. He is a former Trustee of the V & A Museum. Sir Timothy and Lady Sainsbury have been keen supporters of Living Paintings for 20 years.



"I think the very best way to get children to develop a love of books is to share stories with them when they are little. But how can you interest a child in a picture book when they are blind? The answer is through the touch and sound publications that the award winning Living Paintings offer in their free national library - children can feel what The Gruffalo, Winnie the Pooh, Thomas the Tank Engine are like. And because of their unique design the books can be shared – everyone enjoying the story together."

Dame Jacqueline Wilson



Living
Paintings

Trustees Report & Financial Statements to 31st May 2020

Page: 28

Our Ambassadors

We benefit from the support of three **Living Paintings Ambassadors** who have been appointed with the joint purpose of giving them a voice as beneficiaries of our charity and providing positive role models for other people who are experiencing sight loss.

Kali Gilbert is mother of seven year old Tayen who loves our Touch to See books. Kali is a great supporter of our work and an excellent spokesperson because she believes passionately in the value of what we do – helping blind children, like Tayen, read and develop a love of picture books. Tayen lost her sight at 18 months and Kali is a ready communicator about the trials, tribulations and joys of being this special little girl's mother.

Lucy Edwards is a go getting young person who has a highly successful YouTube channel, Yesterday's Wishes, and her tutorials on helping blind people put on make-up have made her an internet sensation leading to a number of TV appearances.

Emily Davison – Emily, is an aspiring writer who has already been published in the Huffington Post and Guardian – she works closely with us as our Fashion Ambassador and road-tests our new publications for young people. Emily writes brilliant blogs for our website and helps blind and partially sighted teens build the confidence to enjoy fashion. Emily is advocating for improved accessibility in children's literature, pursuing her keen interest in space, and studying for her MA in children's literature at Goldsmiths.

Risk Management

The Trustees have continued to refine our risk management strategy. This has included a review of the major risks which the charity may encounter, and the establishment and enhancement of procedures to mitigate these identified risks. The principal risk remains that of maintaining current levels of income. Steps that have been taken to mitigate this risk include the establishment and maintenance of a comprehensive database providing weekly, monthly and annual reporting and which drives our fundraising efforts alongside the creation of a fundraising strategy which includes the development of new income streams. Trustees are satisfied that adequate systems are in place to mitigate any exposure to our major risks, in particular financial and operational risk. During Covid-19 the charity has undertaken regular risk assessments following ever-evolving government and WHO guidelines.

Key Management Personnel Remuneration

The Trustees consider the Board of Trustees and the Senior Management Team as comprising the key management personnel of the charity in charge of directing and controlling the charity and running and operating the charity on a day to day basis. All Trustees give of their time freely and no Trustee remuneration was paid in the year. Details of Trustee expenses and related party transactions are disclosed in notes 6 and 17 to the accounts.

The pay of the Senior Management Team is reviewed annually and is normally increased in accordance with average earnings. The remuneration is reviewed to ensure that it is fair and not out of line with similar roles.

Financial Review

The financial results for the year are shown on pages 37 - 38. We achieved an income of £565,157 while expenditure was £456,551 giving a surplus of £108,606 for the year.

Income

This year we raised £565,157. We receive no statutory funding and are entirely dependent on voluntary donations. We are reliant on donations from grant making trusts to fund the majority of our work and we are grateful to all those trusts who supported us again or for the first time during the year. They are listed on pages 31 - 32.

There are two main components which make up income in the year:

1. Donations and gifts of £291,815 for the Unrestricted Fund (as defined on page 37). These donations support our core work of operating a free library service to blind and partially sighted people in Britain and Ireland and include Covid-19 Emergency Funding.
2. Donations and gifts of £273,342 for the Restricted Fund (as defined on page 37). This income relates to the production of specific new Touch to See books and specific areas of our bespoke library service to members including Covid-19 Emergency Funding.

The Trustees have set the budget for 2020/21 at much reduced income levels in order to reflect the financial impact of Covid-19 on our Fundraising Events income and the overall economic climate. Only a small amount of our income is promised in advance therefore the support of our donors is absolutely crucial to our ability to continue our much needed service to our beneficiaries during these exceptionally difficult times.

Expenditure

This year we spent £456,551 reflecting our investment in developing new income streams which was proving highly successful until the onset of Covid-19. Budget expenditure for 2020/21 is significantly lower as we undertake essential cost cutting exercises, largely by reducing staffing, in order to reduce as much as possible the significant deficit for the year that we forecast caused by our projected drop in income due to Covid-19.

Operating Surplus

We achieved an extraordinary operating surplus of £108,606 for the year. This was thanks to Covid-19 Emergency Funding received from a small group of loyal grant making trusts with whom we have a long term relationship and local community foundations with some extra help from a little blind boy's fundraising efforts which raised £26,000 during May 2020. These funds were largely received in the last 6 weeks of the year to 31st May 2020, and will be expended in 2020/2021 on underwriting our charity's essential services to blind and partially sighted people during a time that we expect to be financially very challenging as the impact of the pandemic continues to be felt.



Our Fund Balances at 31st May 2020

1. The Unrestricted Fund of £320,161 comprises:

- £172,185 as a General Reserve.
- £147,976 Designated and relating to property and equipment for use by the charity.

2. The Restricted Fund of £164,881 comprises:

- £101,769 funded projects that are not yet completed. This mainly relates to the production of new Touch to See books, where the production period is usually between 9 and 18 months.
- £63,112 for the Library Fund. This relates to donations which have been given specifically for various elements of the Library Service, including donations for the provision of the library service in specific geographical areas.

For clarity, during the year the trustees agreed to designate the capital element within the Unrestricted Fund comprising property and fixed assets for use by charity.

Our Reserves Policy

The Trustees have defined the Reserves Policy such that a General Reserve of Unrestricted Funds excluding fixed assets and any secured loans thereon be maintained equivalent to 6 months non-discretionary expenditure. The management team proactively work to maintain reserves above the policy threshold through routinely monitoring the funding position combined with the on-going forecasting of anticipated income and expenditure. Should funds fall below defined trigger points set above the policy threshold, there are clear procedures in place to assess the situation and determine whether mitigating actions are required to recover the position. The Trust is pleased to report that the policy aim has been achieved with a closing General Reserve of £172,185.

Our Donors: 1st June 2019 – 31st May 2020

Living Paintings is entirely dependent on voluntary donations, listed below are some of the organisations which made grants:

BBC Children in Need
The Headley Trust
The Underwood Trust
Garfield Weston Foundation
Woodroffe Benton Foundation
The Edward Gostling Foundation
The Mercers' Company
Thomas Pocklington Trust
Postcode Community Trust
The Clare Milne Trust
The Aviva Community Foundation
The Eveson Charitable Trust
The Cotswold Primrose Charitable Trust
The Hutton Foundation
The Barbara Ward Children's Foundation

The Shears Foundation
The Shoe Zone Trust
The Valentine Charitable Trust
Miss Agnes H Hunter's Trust
The W O Street Charitable Foundation
Greenham Trust
Heathrow Community Trust
Berkshire Community Foundation
Sandra Charitable Trust
Cambridgeshire Community Foundation
Simon Gibson Charitable Trust
The Walter Guinness Charitable Trust
Sir James Knott Trust
The Shanly Foundation

Kent Community Foundation
The Sylvia Adams Charitable Trust
Help for Health
The Fence Club Trust Fund
Rees Jeffreys Road Fund
Thomas Cook Children's Charity
The Wixamtree Trust
The Syder Foundation
Hays Travel Foundation
The Mackintosh Foundation
The Hedley Foundation
The Englefield Charitable Trust
The Toy Trust
The Norton Foundation
Milton Keynes Community Foundation
Suffolk Community Foundation



The Dorothy Hay-Bolton Charitable Trust	The Mickleham Trust	The Sydney Black Charitable Trust
The Hugh Fraser Foundation	Barnwood Trust	P & C Hickinbotham Charitable Trust
Lifeline 4 Kids	The Norman Family Charitable Trust	The Sylvia and Colin Shepherd Charitable Trust
The Boshier-Hinton Foundation	Cruden Foundation Limited	The Ammco Trust
Mrs E Y Imrie's Charitable Trust	The Chalk Cliff Trust	The George Henry Collins Charity
Anne Duchess of Westminster's Charity	Lions Club of Chichester	The Gibbons Family Trust
The Edward and Dorothy Cadbury Trust	The Paul Bassham Charitable Trust	The Gilbert & Eileen Edgar Foundation
The Astor Foundation	The Holbeck Charitable Trust	The W E Dunn Trust
Nottinghamshire Community Foundation	The Roger & Douglas Turner Charitable Trust	Aylesford Family Charitable Trust
The Russell Trust	Oakdale Trust	The JTH Charitable Trust
The Hemby Trust	The Charles Irving Charitable Trust	The Sue Thomson Foundation
The Joseph and Annie Cattle Trust	Bagri Foundation	The Autumn Stone Foundation
Sir John Priestman Charity Trust	The George A Moore Foundation	The Stanton Ballard Charitable Trust
The Charles S French Charitable Trust	Aberbrothock Skea Trust	Annie Tranmer Charitable Trust
The Gale Family Charity Trust	The Colefax Charitable Trust	The Stephenson James Charitable Trust
The Harry Payne Trust	John Lewis Newbury	The Sir James Reckitt Charity
The William Kenneth Hutchings Charitable Trust	Marsh Christian Trust	Proven Family Trust
Helen Robertson Charitable Trust	Hampshire & Isle of Wight Community Foundation	The Florence Turner Trust
P F Charitable Trust	Community Foundation For Buckinghamshire	Anthony and Deirdre Montagu Charitable Trust
John James Bristol Foundation	The W. M. Mann Foundation	The Langtree Trust
The Lillie Johnson Charitable Trust	The Jessie Spencer Trust	The Peter Baker Foundation
A W Gale Charitable Trust	Harford Charitable Trust	Norman Collinson Charitable Trust
The Macfarlane Walker Trust	Eddie Dinshaw Foundation	The Alchemy Foundation
The Walker Trust	The Alan Jenkin Stokes Memorial Trust	The James Wise Charitable Trust
The Benham Charitable Settlement	Douglas Arter Foundation	Archer Charitable Trust
Hull and East Riding Charitable Trust	The Ormonde Charitable Trust	The Fitton Trust
Somerset Community Foundation	The Tay Charitable Trust	Melton Mowbray Building Society Charitable Foundation
Michael Watson Charitable Trust	Bartlett Taylor Charitable Trust	Chapman Charitable Trust
	The Music Sales Charitable Trust	
	The R J Larg Family Trust	

Additionally, we received highly valued gifts made by friends to Living Paintings and beneficiaries. We also received invaluable support in kind from organisations, companies and individuals.

To each and every person, group, business and grant making trust who have supported us this year we extend the greatest of thanks. It is their generosity that makes our work possible.



Camilla Oldland

Camilla Oldland - Chief Executive

Trustees' Responsibilities Statement

The Trustees (who are also directors of The Living Paintings Trust for the purposes of company law) are responsible for preparing the Trustees' report and the financial statements in accordance with applicable law and United Kingdom Accounting Standards (United Kingdom Generally Accepted Accounting Practice).

Company law requires the Trustees to prepare financial statements for each financial year. Under company law the Trustees must not approve the financial statements unless they are satisfied that they give a true and fair view of the state of affairs of the charitable company and of the incoming resources and application of resources, including the income and expenditure, of the charitable company for that period. In preparing these financial statements, the Trustees are required to:

- select suitable accounting policies and then apply them consistently;
- observe the methods and principles in the Charities SORP;
- make judgments and accounting estimates that are reasonable and prudent;
- prepare the financial statements on the going concern basis unless it is inappropriate to presume that the charitable company will continue in operation.

The Trustees are responsible for keeping adequate accounting records that are sufficient to show and explain the charitable company's transactions and disclose with reasonable accuracy at any time the financial position of the charitable company and enable them to ensure that the financial statements comply with the Companies Act 2006. They are also responsible for safeguarding the assets of the charitable company and hence for taking reasonable steps for the prevention and detection of fraud and other irregularities.

Disclosure of Information to Auditor

Each of the persons who are Trustees at the time when this Trustees' report is approved has confirmed that:

- so far as that Trustee is aware, there is no relevant audit information of which the company's auditor . Under company law the Trustees must not approve the financial statements unless they are satisfied that they unaware, and
- that Trustee has taken all the steps that ought to have been taken as a Trustee in order to be aware of any information needed by the company's auditor in connection with preparing its report and to establish that the company's auditor . Under company law the Trustees must not approve the financial statements unless they are satisfied that they aware of that information.

Auditor

The auditor, James Cowper Kreston, year indicated the willingness to continue in office. The Designated Trustees will propose a motion re-appointing the auditor at a meeting of the Trustees.



Catherine Bailey - Chairman



Independent Auditor's Report to the Members of the Living Paintings Trust

Opinion

We have audited the financial statements of The Living Paintings Trust (the 'charitable company') for the year ended 31 May 2020 set out on pages 37 to 49. The financial reporting framework that has been applied in their preparation is applicable law and United Kingdom Accounting Standards, including Financial Reporting Standard 102 'The Financial Reporting Standard applicable in the UK and Republic of Ireland' (United Kingdom Generally Accepted Accounting Practice).

In our opinion the financial statements:

- give a true and fair view of the state of the charitable company's affairs as at 31 May 2020 and of its incoming resources and application of resources, including its income and expenditure for the year then ended;
- have been properly prepared in accordance with United Kingdom Generally Accepted Accounting Practice; and
- have been prepared in accordance with the requirements of the Companies Act 2006.

Basis for Opinion

We conducted our audit in accordance with International Standards on Auditing (UK) (ISAs (UK)) and applicable law. Our responsibilities under those standards are further described in the Auditor's responsibilities for the audit of the financial statements section of our report. We are independent of the charitable company in accordance with the ethical requirements that are relevant to our audit of the financial statements in the United Kingdom, including the Financial Reporting Council's Ethical Standard, and we have fulfilled our other ethical responsibilities in accordance with these requirements. We believe that the audit evidence we have obtained is sufficient and appropriate to provide a basis for our opinion.

Conclusions Relating to Going Concern

We have nothing to report in respect of the following matters in relation to which the ISAs (UK) require us to report to you where:

- the Trustees' use of the going concern basis of accounting in the preparation of the financial statements is not appropriate; or
- the Trustees have not disclosed in the financial statements any identified material uncertainties that may cast significant doubt about the charitable company's ability to continue to adopt the going concern basis of accounting for a period of at least twelve months from the date when the financial statements are authorised for issue.

Other Information

The Trustees are responsible for the other information. The other information comprises the information included in the Annual report, other than the financial statements and our Auditor's

report thereon. Our opinion on the financial statements does not cover the other information and, except to the extent otherwise explicitly stated in our report, we do not express any form of assurance conclusion thereon.

In connection with our audit of the financial statements, our responsibility is to read the other information and, in doing so, consider whether the other information is materially inconsistent with the financial statements or our knowledge obtained in the audit or otherwise appears to be materially misstated. If we identify such material inconsistencies or apparent material misstatements, we are required to determine whether there is a material misstatement in the financial statements or a material misstatement of the other information. If, based on the work we have performed, we conclude that there is a material misstatement of this other information, we are required to report that fact.

We have nothing to report in this regard.

Opinion on Other Matters Prescribed by the Companies Act 2006

In our opinion, based on the work undertaken in the course of the audit:

- the information given in the Trustees' Report for the financial year for which the financial statements are prepared is consistent with the financial statements.
- the Trustees' Report has been prepared in accordance with applicable legal requirements.

Matters on which we are Required to Report by Exception

In the light of our knowledge and understanding of the charitable company and its environment obtained in the course of the audit, we have not identified material misstatements in the Trustees' Report.

We have nothing to report in respect of the following matters in relation to which the Companies Act 2006 requires us to report to you if, in our opinion:

- adequate accounting records have not been kept, or returns adequate for our audit have not been received from branches not visited by us; or
- the financial statements are not in agreement with the accounting records and returns; or
- certain disclosures of Trustees' remuneration specified by law are not made; or
- we have not received all the information and explanations we require for our audit; or
- the Trustees were not entitled to prepare the financial statements in accordance with the small companies regime and take advantage of the small companies' exemptions in preparing the Trustees' Report and from the requirement to prepare a Strategic Report.

Responsibilities of Trustees

As explained more fully in the Trustees' responsibilities statement, the Trustees (who are also the directors of the charitable company for the purposes of company law) are responsible for the preparation of the financial statements and for being satisfied that they give a true and fair view, and for such internal control as the Trustees determine is necessary to enable the preparation of financial statements that are free from material misstatement, whether due to fraud or error.

In preparing the financial statements, the Trustees are responsible for assessing the charitable company's ability to continue as a going concern, disclosing, as applicable, matters related to going concern and using the going concern basis of accounting unless the Trustees either intend to liquidate the charitable company or to cease operations, or have no realistic alternative but to do so.

Auditor's Responsibilities for the Audit of the Financial Statements

Our objectives are to obtain reasonable assurance about whether the financial statements as a whole are free from material misstatement, whether due to fraud or error, and to issue an Auditor's report that includes our opinion. Reasonable assurance is a high level of assurance, but is not a guarantee that an audit conducted in accordance with ISAs (UK) will always detect a material misstatement when it exists. Misstatements can arise from fraud or error and are considered material if, individually or in the aggregate, they could reasonably be expected to influence the economic decisions of users taken on the basis of these financial statements.

A further description of our responsibilities for the audit of the financial statements is located on the Financial Reporting Council's website at: www.frc.org.uk/auditorsresponsibilities. This description forms part of our Auditor's report.

Use of Our Report

This report is made solely to the charitable company's members, as a body, in accordance with Chapter 3 of Part 16 of the Companies Act 2006. Our audit work has been undertaken so that we might state to the charitable company's members those matters we are required to state to them in an Auditor's report and for no other purpose. To the fullest extent permitted by law, we do not accept or assume responsibility to anyone other than the charitable company and its members, as a body, for our audit work, for this report, or for the opinions we have formed.



Michael Farwell MA FCA DChA (Senior statutory auditor) for and on behalf of

James Cowper Kreston

Chartered Accountants and Statutory Auditor

2 Communications Road, Greenham Business Park Greenham, Newbury, Berkshire, RG19 6AB.

Date: 15/03/2021



Statement of Financial Activities Incorporating Income and Expenditure Account for the Year Ended 31 May 2020

	Note	Restricted funds 2020 £	Unrestricted funds 2020 £	Total funds 2020 £	Total funds 2019 £
INCOME FROM:					
Donations	3	273,342	288,341	561,683	425,188
Other trading activities		-	-	-	72
Investments		-	118	118	50
Other income		-	3,356	3,356	-
TOTAL INCOME		273,342	291,815	565,157	425,310
EXPENDITURE ON:					
Raising funds		-	37,437	37,437	45,969
Charitable activities	4	285,636	133,478	419,114	346,338
TOTAL EXPENDITURE	5	285,636	170,915	456,551	392,307
NET INCOME / (EXPENDITURE)		(12,294)	120,900	108,606	33,003
Transfers between funds	13	9,000	(9,000)	-	-
NET INCOME BEFORE OTHER RECOGNISED GAINS AND LOSSES		(3,294)	111,900	108,606	33,003
NET MOVEMENT IN FUNDS		(3,294)	111,900	108,606	33,003
RECONCILIATION OF FUNDS:					
Total funds brought forward		168,175	208,261	376,436	343,433
TOTAL FUNDS CARRIED FORWARD		164,881	320,161	485,042	376,436

The notes on pages 40 to 49 form part of these financial statements.

ANALYSIS OF FUNDS CARRIED FORWARD AT 31 MAY 2020

Unrestricted Fund	£
General reserve	172,185
Designated Fund: Property & fixed assets for use by charity	147,976
	320,161
Restricted fund	
Funded projects awaiting completion	101,769
Library fund	63,112
	164,881
TOTAL FUNDS CARRIED FORWARD	485,042

Balance Sheet as at 31 May 2020

	Note	2020 £	2019 £
FIXED ASSETS			
Tangible assets	9	240,714	248,335
CURRENT ASSETS			
Debtors	10	35,965	36,848
Cash at bank and in hand		323,354	225,087
		<u>359,319</u>	<u>261,935</u>
CREDITORS:			
amounts falling due within one year	11	<u>(28,899)</u>	<u>(41,056)</u>
NET CURRENT ASSETS		<u>330,420</u>	<u>220,879</u>
TOTAL ASSETS LESS CURRENT LIABILITIES		571,134	469,214
CREDITORS:			
amounts falling due after more than one year	12	<u>(86,092)</u>	<u>(92,778)</u>
NET ASSETS		<u>485,042</u>	<u>376,436</u>
CHARITY FUNDS			
Restricted funds	13	164,881	168,175
Unrestricted funds	13	320,161	208,261
TOTAL FUNDS		<u>485,042</u>	<u>376,436</u>

The company's financial statements have been prepared in accordance with the provisions applicable to companies subject to the small companies regime.

The financial statements were approved and authorised for issue by the Trustees on 12/03/2021 and signed on their behalf, by:



Cat Bailey – Chairman



Neil Walke ACA – Treasurer

The notes on pages 40 - 49 form part of these financial statements.

Statement of Cash Flows for the Year Ended 31 May 2020

		2020	2019
	Note	£	£
Cash flows from operating activities			
Net cash provided by / (used in) operating activities	15	<u>101,248</u>	<u>52,671</u>
Cash flows from investing activities:			
Purchase of tangible fixed assets		<u>(2,981)</u>	<u>(18,428)</u>
Net cash used in investing activities		<u>(2,981)</u>	<u>(18,428)</u>
Change in cash and cash equivalents in the year		98,267	34,243
Cash and cash equivalents brought forward		<u>225,087</u>	<u>190,844</u>
Cash and cash equivalents carried forward	16	<u><u>323,354</u></u>	<u><u>225,087</u></u>

The notes on pages 40 to 49 form part of these financial statements.

Notes to the Financial Statements for the Year Ended 31 May 2020

1. ACCOUNTING POLICIES

1.1 Basis of preparation of financial statements

The financial statements have been prepared in accordance with the Charities SORP (FRS 102) - Accounting and Reporting by Charities: Statement of Recommended Practice applicable to charities preparing their accounts in accordance with the Financial Reporting Standard applicable in the UK and Republic of Ireland (FRS 102) (effective 1 January 2019), the Financial Reporting Standard applicable in the UK and Republic of Ireland (FRS 102) and the Companies Act 2006.

The Living Paintings Trust meets the definition of a public benefit entity under FRS 102. Assets and liabilities are initially recognised at historical cost or transaction value unless otherwise stated in the relevant accounting policy.

1.2 Going concern

The Trustees have considered the impact of the global COVID-19 pandemic on the ability of the charity to continue trading for the foreseeable future. This review has included considering the impact of the pandemic to the date of signing the financial statements and updating financial projections. Based on this review and taken together with existing financing facilities the Trustees believe that the financial statements have been prepared appropriately on the going concern basis.

1.3 Company status

The Living Paintings Trust is a registered charity and company limited by guarantee. The liability of the members of the company is limited by their guarantee to contribute £1 each towards the liabilities of the company in the event of liquidation.

1.4 Fund accounting

General funds are unrestricted funds which are available for use at the discretion of the Trustees in furtherance of the general objectives of the company and which have not been designated for other purposes.

Restricted funds are funds which are to be used in accordance with specific restrictions imposed by donors or which have been raised by the company for particular purposes. The costs of raising and administering such funds are charged against the specific fund. The aim and use of each restricted fund is set out in the notes to the financial statements.

Investment income, gains and losses are allocated to the appropriate fund.

1.5 Income

All income is recognised once the company has entitlement to the income, it is probable that the income will be received and the amount of income receivable can be measured reliably.

Donated services or facilities are recognised when the company has control over the item, any conditions associated with the donated item have been met, the receipt of economic benefit

from the use of the company of the item is probable and that economic benefit can be measured reliably.

On receipt, donated professional services and donated facilities are recognised on the basis of the value of the gift to the company which is the amount the company would have been willing to pay to obtain services or facilities of equivalent economic benefit on the open market; a corresponding amount is then recognised in expenditure in the period of receipt.

Income tax recoverable in relation to donations received under Gift Aid or deeds of covenant is recognised at the time of the donation.

1.6 Expenditure

Expenditure is recognised once there is a legal or constructive obligation to transfer economic benefit to a third party, it is probable that a transfer of economic benefits will be required in settlement and the amount of the obligation can be measured reliably. Expenditure is classified by activity. The costs of each activity are made up of the total of direct costs and shared costs, including support costs involved in undertaking each activity. Direct costs attributable to a single activity are allocated directly to that activity. Shared costs which contribute to more than one activity and support costs which are not attributable to a single activity are apportioned between those activities on a basis consistent with the use of resources. Central staff costs are allocated on the basis of time spent, and depreciation charges allocated on the portion of the asset's use.

Fundraising costs are those incurred in seeking voluntary contributions and do not include the costs of disseminating information in support of the charitable activities. Governance costs are those incurred in connection with administration of the company and compliance with constitutional and statutory requirements.

Costs of generating funds are costs incurred in attracting voluntary income, and those incurred in trading activities that raise funds.

Charitable activities and Governance costs are costs incurred on the company's educational operations, including support costs and costs relating to the governance of the company apportioned to charitable activities.

Library materials are only of benefit to blind and partially sighted people and therefore are of very low commercial value. As such they are expensed in the year rather than being treated as a capital asset for ongoing use in the charity.

All expenditure is inclusive of irrecoverable VAT.

1.7 Tangible fixed assets and depreciation

All assets costing more than £100 are capitalised by the Trust.

Tangible fixed assets are carried at cost, net of depreciation and any provision for impairment. Depreciation is provided at rates calculated to write off the cost of fixed assets, less their estimated residual value, over their expected useful lives on the following bases:

Long term leasehold property	-	50 years - straight line basis
Office equipment	-	5 - 10 years - straight line basis
Computer equipment	-	3 years - straight line basis



1.8 Interest receivable

Interest on funds held on deposit is included when receivable and the amount can be measured reliably by the company; this is normally upon notification of the interest paid or payable by the Bank.

1.9 Debtors

Trade and other debtors are recognised at the settlement amount after any trade discount offered. Prepayments are valued at the amount prepaid net of any trade discounts due.

1.10 Cash at Bank and in hand

Cash at bank and in hand includes cash and short term highly liquid investments with a short maturity of three months or less from the date of acquisition or opening of the deposit or similar account.

1.11 Liabilities and provisions

Liabilities are recognised when there is an obligation at the Balance sheet date as a result of a past event, it is probable that a transfer of economic benefit will be required in settlement, and the amount of the settlement can be estimated reliably. Liabilities are recognised at the amount that the company anticipates it will pay to settle the debt or the amount it has received as advanced payments for the goods or services it must provide. Provisions are measured at the best estimate of the amounts required to settle the obligation. Where the effect of the time value of money is material, the provision is based on the present value of those amounts, discounted at the pre-tax discount rate that reflects the risks specific to the liability. The unwinding of the discount is recognised within interest payable and similar charges.

2. JUDGEMENTS IN APPLYING ACCOUNTING POLICIES AND KEY SOURCES OF ESTIMATION UNCERTAINTY

The preparation of the financial statements requires management to make judgements, estimates and assumptions that affect the amounts reported for assets and liabilities as at the balance sheet date and the amounts reported for revenues and expenses during the year. However, the nature of estimation means that actual outcomes could differ from those estimates. The following judgements (apart from those involving estimates) have had the most significant effect on amounts recognised in the financial statements.

Tangible fixed assets (see note 9)

Tangible fixed assets are depreciated over their useful lives taking into account residual values, where appropriate. The actual lives of the assets and residual values are assessed annually and may vary depending on a number of factors. Residual value assessments consider issues such as the remaining life of the asset and projected disposal values.

3. INCOME FROM DONATIONS AND LEGACIES

	Restricted funds 2020 £	Unrestricted funds 2020 £	Total funds 2020	Total funds 2019 £
Donations	273,342	288,341	561,683	420,185
Legacies	-	-	-	5,003
Total donations and legacies	<u>273,342</u>	<u>288,341</u>	<u>561,683</u>	<u>425,188</u>
Total 2019	<u>258,308</u>	<u>166,880</u>	<u>425,188</u>	

4. GOVERNANCE COSTS

	Restricted funds	Unrestricted funds	Total funds	Total funds
	2020	2020	2020	2019
	£	£	£	£
Governance Auditors' remuneration	-	4,633	4,633	4,015
Consultancy fees	-	2,390	2,390	741
	<u>-</u>	<u>7,023</u>	<u>7,023</u>	<u>4,756</u>

5. ANALYSIS OF EXPENDITURE BY EXPENDITURE TYPE

	Staff costs	Other costs	Total	Total
	2020	2020	2020	2019
	£	£	£	£
Raising funds	32,661	4,776	37,437	45,969
Costs of raising funds	32,661	4,776	37,437	45,969
Direct charitable expenditure	295,457	116,6034	412,091	341,582
Expenditure on governance	-	7,023	7,023	4,756
	<u>328,118</u>	<u>128,433</u>	<u>456,551</u>	<u>392,307</u>
Total 2019	266,342	125,965	392,307	

6. NET INCOME/(EXPENDITURE)

This is stated after charging:

	2020	2019
	£	£
Depreciation of tangible fixed assets:		
- owned by the charity	10,602	10,903
Interest on loans	<u>4,484</u>	<u>4,806</u>

During the year, no Trustees received any remuneration (2019 - £NIL).

During the year, no Trustees received any benefits in kind (2019 - £NIL).

During the year, no Trustees received any reimbursement of expenses (2019 - £NIL).

7. AUDITORS' REMUNERATION

	2020	2019
	£	£
Fees payable to the company's auditor and its associates for the audit of the company's annual accounts	<u>4,633</u>	<u>4,015</u>

8. STAFF COSTS

Staff costs were as follows:

	2020	2019
	£	£
Wages and salaries	299,164	243,351
Social security costs	21,292	18,251
Other pension costs	7,662	4,740
	328,118	266,342

The average number of persons employed by the company during the year was as follows:

	2020	2019
	No.	No.
Production	4	2
Fundraising and publicity	3	2
Administration and management	3	3
Library	4	4
	14	11

The number of higher paid employees was:

2020	2019
No.	No.
1	0

The key management personnel of the charity comprise Trustees and the Senior Management Team. The total employee benefits of the key management personnel were £71,722 (2019: £68,355).

9. TANGIBLE FIXED ASSETS

	Long term leasehold property	Office equipment	Computer equipment	Total
	£	£	£	£
Cost				
At 1 June 2019	340,510	59,170	56,380	456,060
Additions	-	638	2,343	2,981
At 31 May 2020	340,510	59,808	58,723	459,041
Depreciation				
At 1 June 2019	112,614	47,464	47,647	207,725
Charge for the year	6,810	2,432	1,360	10,602
At 31 May 2019	119,424	49,896	49,007	218,327
Net book value				
At 31 May 2020	221,086	9,912	9,716	240,714
At 31 May 2019	227,896	11,706	8,733	248,335

The leasehold premises comprise 2 leases each of 999 years calculated from 29th September 1986 each at a rent of £100 per annum.

10. DEBTORS

	2020	2019
	£	£
Trade debtors	1,386	711
Other debtors - prepayments	3,703	4,218
Accrued income	30,876	31,919
	<u>35,965</u>	<u>36,848</u>

11. CREDITORS: Amounts falling due within one year

	2020	2019
	£	£
Bank loans and overdrafts	6,646	6,327
Trade creditors	2,214	8,198
Other taxation and social security	4,535	4,019
Other creditors	4,374	5,554
Accruals and deferred income	11,130	16,958
	<u>28,899</u>	<u>41,056</u>

12. CREDITORS: Amounts falling due after more than one year

	2020	2019
	£	£
Bank loans	<u>86,092</u>	<u>92,778</u>

The Trust raised a loan in April 2006 from The Charity Bank Limited for £155,000 in order to finance the acquisition of the leasehold premises identified as Unit 9, Kingsclere Park. The bank loan is secured by a first fixed charge over the identified leasehold premises.

The aggregate amount of secured liabilities is £92,738 (2019: £99,105).

13. STATEMENT OF FUNDS

STATEMENT OF FUNDS - CURRENT YEAR

	Balance at 1 June 2019 £	Income £	Expenditure £	Transfers in/out £	Balance at 31 May 2020 £
Designated Fixed Asset fund	-	-	-	147,976	147,976
Unrestricted funds					
Property and fixed assets for use by the charity	47,541	-	-	(47,541)	-
General reserve	160,720	291,815	(170,915)	(109,435)	172,185
Total Unrestricted funds	<u>208,261</u>	<u>291,815</u>	<u>(170,915)</u>	<u>(9,000)</u>	<u>320,161</u>
Restricted funds					
Funded projects awaiting completion	116,702	127,842	(164,761)	21,986	101,769
Library fund	51,473	145,500	(120,975)	(12,986)	63,112
Total Restricted funds	<u>168,175</u>	<u>273,242</u>	<u>(285,636)</u>	<u>9,000</u>	<u>161,881</u>
TOTAL FUNDS	<u>376,436</u>	<u>565,257</u>	<u>(456,551)</u>	<u>-</u>	<u>485,042</u>

During the year the Trustees agreed to create a Designated Fund within which is held the property and fixed assets for use by charity.

STATEMENT OF FUNDS - PRIOR YEAR

	Balance at 1 June 2018 £	Income £	Expenditure £	Balance at 31 May 2019 £
Unrestricted funds				
Property and fixed assets for use by the charity	54,351	-	(6,810)	47,541
General reserve	142,377	167,002	(148,659)	160,720
Total Unrestricted funds	<u>196,728</u>	<u>167,002</u>	<u>(155,469)</u>	<u>208,261</u>
Restricted funds				
Funded projects awaiting completion	113,386	88,808	(85,492)	116,702
Library fund	33,319	169,500	(151,346)	51,473
Total Restricted funds	<u>146,705</u>	<u>258,308</u>	<u>(236,838)</u>	<u>168,175</u>
TOTAL FUNDS	<u>343,433</u>	<u>425,310</u>	<u>(392,307)</u>	<u>376,436</u>

SUMMARY OF FUNDS - CURRENT YEAR

	Balance at 1 June 2019 £	Income £	Expenditure £	Transfers In/out £	Balance at 31 May 2020 £
Designated funds	-	-	-	147,976	147,976
General reserve	208,261	291,815	(170,915)	(156,976)	172,185
Total Unrestricted funds	208,261	291,815	(170,915)	(9,000)	320,161
Restricted funds	168,175	273,342	(285,636)	9,000	164,881
TOTAL FUNDS	376,436	565,257	(456,551)	-	485,042

SUMMARY OF FUNDS - PRIOR YEAR

	Balance at 1 June 2018 £	Income £	Expenditure £	Balance at 31 May 2019 £
Unrestricted funds	196,728	167,002	(155,469)	208,261
Restricted funds	146,705	258,308	(236,838)	168,175
TOTAL FUNDS	343,433	425,310	(392,307)	376,436

Funded projects awaiting completion consist of numerous funds of varying sizes covering specific projects in line with the charity's objectives for instance the creation and manufacture of new Touch to See book titles.

The Library Fund comprises multiple donations made specifically towards the costs of providing the Library Service free of charge to blind and partially sighted beneficiaries.

Management accounting procedures quarterly track the movement in each individual restricted fund. They provide the necessary information to ensure that the appropriate balance is held in each account in order to complete the projects and thus meet the restrictions imposed by the donors.

14. ANALYSIS OF NET ASSETS BETWEEN FUNDS

ANALYSIS OF NET ASSETS BETWEEN FUNDS - CURRENT YEAR

	Restricted funds 2020 £	Unrestricted funds 2020 £	Total Funds 2020 £
Tangible fixed assets	-	240,714	240,714
Current assets	164,881	194,438	359,319
Creditors due within one year	-	(28,899)	(28,899)
Creditors due in more than one year	-	(86,092)	(86,092)
	<u>168,175</u>	<u>320,161</u>	<u>485,042</u>

ANALYSIS OF NET ASSETS BETWEEN FUNDS - PRIOR YEAR

	Restricted funds 2019 £	Unrestricted funds 2019 £	Total Funds 2019 £
Tangible fixed assets	-	248,335	248,335
Current assets	168,175	93,760	261,935
Creditors due within one year	-	(41,056)	(41,056)
Creditors due in more than one year	-	(92,778)	(92,778)
	<u>168,175</u>	<u>208,261</u>	<u>376,436</u>

15. RECONCILIATION OF NET MOVEMENT IN FUNDS TO NET CASH FLOW FROM OPERATING ACTIVITIES

	2020 £	2019 £
Net (expenditure)/income for the year (as per Statement of Financial Activities)	108,606	33,003
Adjustment for:		
Depreciation charges	10,602	10,903
Decrease/(increase) in debtors	883	(10,746)
Increase/(decrease) in creditors	(18,843)	19,511
Net cash provided by/(used in) operating activities	<u>101,248</u>	<u>52,671</u>

16. ANALYSIS OF CASH AND CASH EQUIVALENTS

	2020	2019
	£	£
Cash in hand	<u>323,354</u>	<u>225,087</u>
Total	<u><u>323,354</u></u>	<u><u>225,087</u></u>

17. RELATED PARTY TRANSACTIONS

C Bailey (Trustee) is a Director of Pink Green Creative Limited. During the year the charity purchased £nil from Pink Green Creative Limited (2019: £2,671).

During the year donations £1,630 were received from 6 Trustees and their family members (2019:£530) and 3 Trustees purchased raffle tickets to a value of £400 (2019:£nil)

18. CONTROLLING PARTY

The Charity is controlled by its Trustees as listed on page 1.

